



NASCAR MPA3200 high efficiency bias bar

Alcon's innovative attitude to the improvement of brake systems for race cars has resulted in a completely fresh approach to brake bias control and adjustment. Using a traditional balance bar, brake balance can vary up to 12% during a single brake application due to friction between the moving parts, which leads to inconsistent bias values and hysteresis in the system. This causes poor modulation and lack of confidence for the driver.

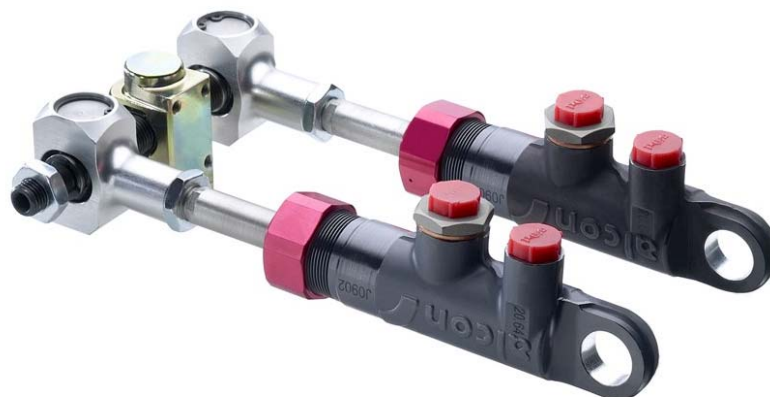
The Alcon high efficiency bias bar maintains a brake balance setting to within 3% by using needle roller bearings in the pivots and a trunion assembly that moves on a threaded rod instead of a spherical bearing sliding in a tube. Each master cylinder is mounted on a spherical bearing which eliminates the need for articulating push rods. The use of a needle roller bearing at the pedal pivot further improves efficiency.

options

- **Master cylinder diameters from 0.625" to 1.00"**

features and benefits

- **Needle roller bearings for reduced friction.**
- **Precision trunion assembly for less free play.**
- **Trunion housing drilled and tapped for easy installation.**
- **Trunion can be mounted on the pedal or on the bulkhead.**
- **Adjuster cable angle does not affect bias setting.**
- **Master cylinder body mounted on spherical bearing (FACTORY INSTALLED).**
- **Fail safe feature means that bias bar locks if one circuit is lost, ensuring pressure is generated in remaining circuit.**
- **Adjuster rod protected from damage at full rotation.**



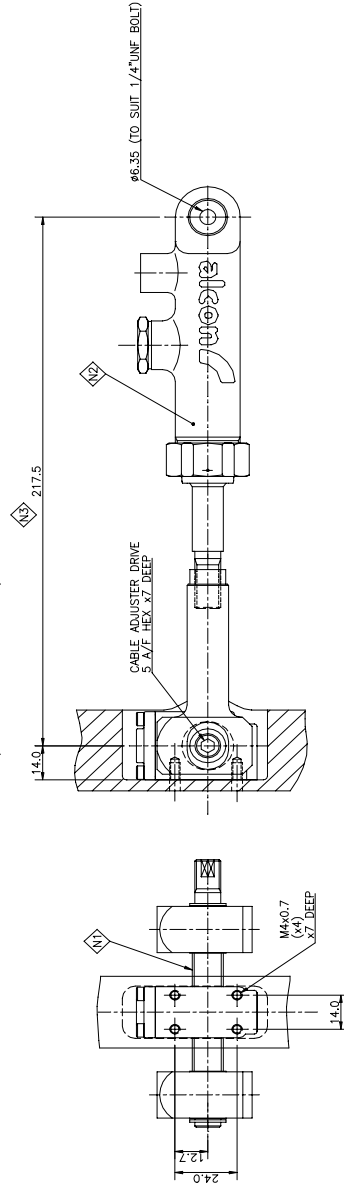
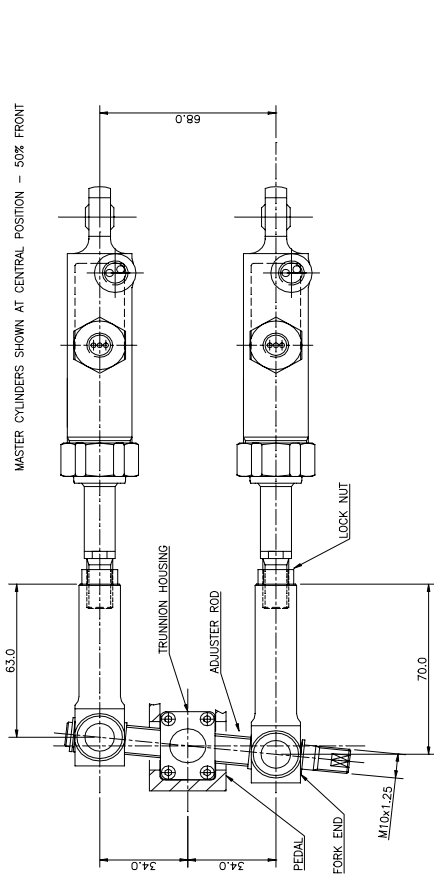
applications

Stock cars with master cylinders in front of fire wall

high efficiency bias bar

part numbers

- Bias bar assembly (W = 68 mm) **MPA3200X107.68**
- Trunion assembly only **THA3200X200**
- Cable adjuster **AAB3430X548**
- 0.625" (15.9 mm) master cylinder **MAR5200HM161MBB**
- 0.700" (17.8 mm) master cylinder **MAR5210HM161MBB**
- 0.750" (19.0 mm) master cylinder **MAR5220HM161MBB**
- 0.812" (20.6 mm) master cylinder **MAR5230HM161MBB**
- 0.875" (22.2 mm) master cylinder **MAR5240HM161MBB**
- 0.9375" (23.8 mm) master cylinder **MAR5250HM161MBB**
- 1.00" (25.4 mm) master cylinder **MAR5260HM161MBB**



master cylinder service parts

- MAR5200SK** 0.625" (15.9 mm) master cylinder service kit
- MAR5210SK** 0.700" (17.8 mm) master cylinder service kit
- MAR5220SK** 0.750" (19.0 mm) master cylinder service kit
- MAR5230SK** 0.812" (20.6 mm) master cylinder service kit
- MAR5240SK** 0.875" (22.2 mm) master cylinder service kit
- MAR5250SK** 0.9375" (23.8 mm) master cylinder service kit
- MAR5260SK** 1.00" (25.4 mm) master cylinder service kit

balance bar service parts

- Trunion shim kit 1 **MPA3200SK** 017mm internal circlip 2 **CSH0080X541**
- Adjuster rod 1 **RSB3200X534.68** 010mm bearing 2 **BPG0080X543**
- 010mm external circlip 2 **CSH0080X544** 08mm needle roller bearing 4 **BSN0080X542**
- 06mm external circlip 1 **CSH0080X538**
- M10 x 1.25 hex half nut 1 **NSH0080X564**
- 010mm flat bearing 1 **BPG0080X540**
- 010mm needle roller bearing 2 **BSN0080X539**
- M3X0.5x8mm cap screw 4 **BSS0080X495**

fork end service parts



Alcon (Mooresville)
T +1 (704) 799 2723
F +1 (704) 799 2287
E jthomas@alconusa.com